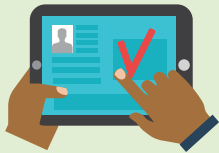


EVERYTHING YOU NEED TO KNOW TO

VOTE

IN NEW JERSEY

NJ's General Election on November 3 Is By Paper Ballot



REGISTER

The Voter Registration
Deadline is October 13

Find out if you are registered [here](#)

Register online [here](#)

Find Voter Registration Forms [here](#)



RECEIVE

County clerks will mail
all active registered voters
a Vote By Mail (VBM)
ballot by October 5.



MAIL

Do not wait!
Mail in your ballot
immediately!

VBM ballots must
be postmarked by
November 3.



DROP

OR put your VBM ballot
in a secure drop box
by 8 p.m. on November 3.

List of drop boxes [here](#)

You can only be the bearer
of three ballots that
are not your own.



GO

OR bring your VBM ballot to
your County Clerk by
November 3 OR your polling
place on November 3.

You can also vote by provisional
ballot at your polling place on
November 3 if you do not have a
VBM ballot.



TRACK

You can see if
your VBM was
received [here](#)

NCJ  ESSEX

NATIONAL COUNCIL OF JEWISH WOMEN

ncjwessex.org